



Country Elevation



Classic Elevation

The Claremont

at *The Greens At Wyoming*

3-4 Bedrooms | 2.5 Bathrooms | 1 Car Garage | 1,960+ Sq. Ft.

The Greens at Wyoming is Wyoming, DE's newest single family home community centrally located to the Dover Air Force Base and all major commuter routes! Experience the rare combination of city-lifestyle and open recreational spaces in your own backyard.

The Claremont model offers an exciting, open design concept creating a casual, entertaining atmosphere. The dramatic 2-story foyer with balcony overlook and the spacious family room just off the kitchen make the Claremont a comfortable place to call home. Featuring the right amount of space in the right areas, the Claremont is known for generous bedroom sizes, spacious kitchen, and excess storage closets. It is also the only home design with a double bowl vanity in the hall bath— creating more space and usability for the 2-3 secondary bedrooms. The owner's bedroom has their own en-suite bath and walk-in closet, as well. The Claremont is the perfect home for all walks of life!

Visit The Greens at Wyoming at:

58 Blue Birch Drive, Camden Wyoming, DE 19934

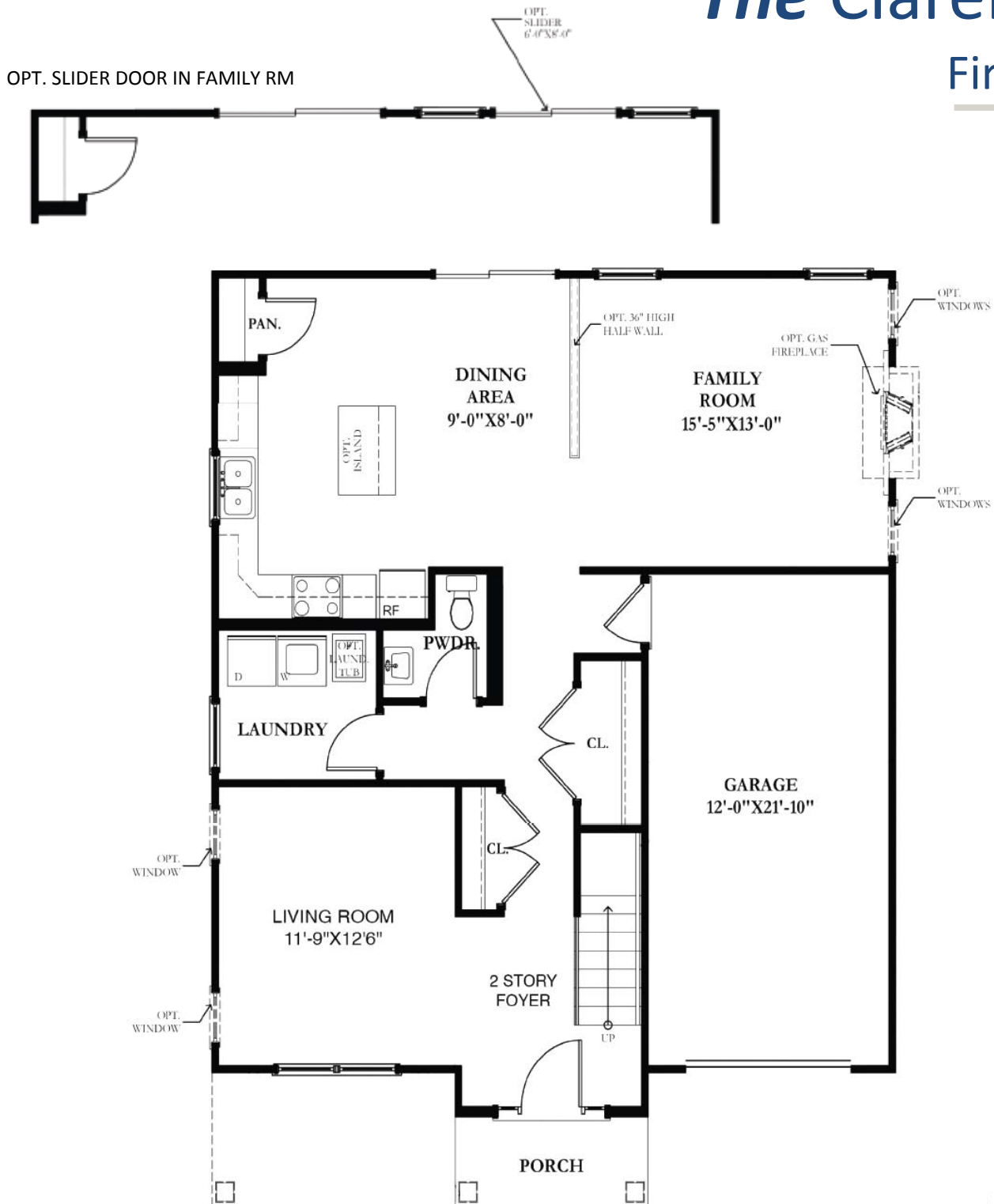
Phone: (610)444-8880 | Email: sales@ChettyBuilders.com

www.ChettyBuilders.com



The Claremont

First Floor



Visit The Greens at Wyoming at:

58 Blue Birch Drive, Camden Wyoming, DE 19934

Phone: (610)444-8880 | Email: sales@ChettyBuilders.com

www.ChettyBuilders.com

Chetty
Builders

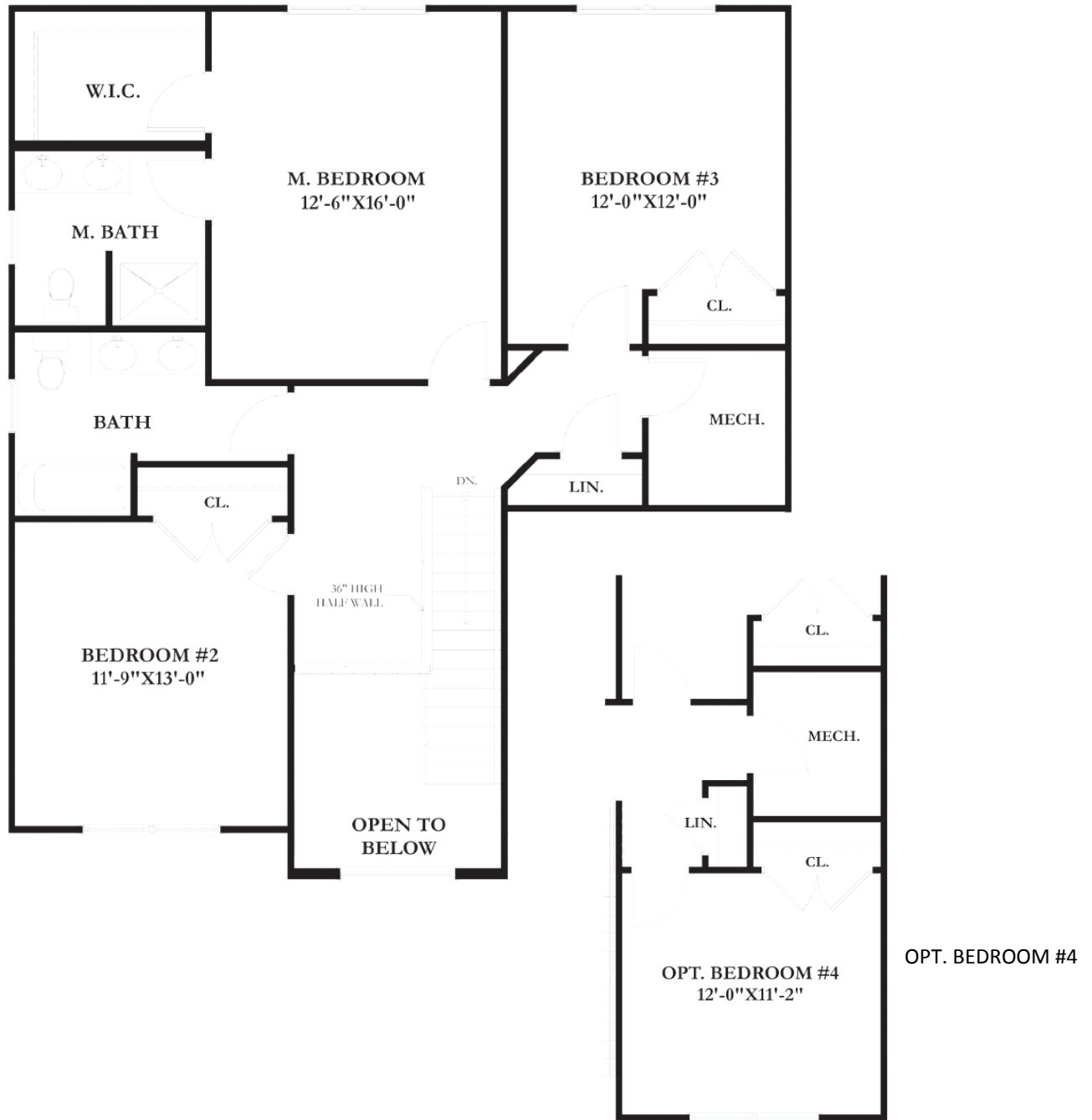


NAHB
NATIONAL ASSOCIATION
OF HOME BUILDERS



The Claremont

Second Floor



Visit The Greens at Wyoming at:

58 Blue Birch Drive, Camden Wyoming, DE 19934

Phone: (610)444-8880 | Email: sales@ChettyBuilders.com

www.ChettyBuilders.com

