



*Country* Elevation



*Classic* Elevation

# *The Alexander*

## at *The Reserve* At Parkesburg Knoll

*3-4 Bedrooms | 2.5 Bathrooms | 2 Car Garage | 1,870+ Sq. Ft.*

Welcome home to The Reserve at Parkesburg Knoll, Parkesburg's best kept secret of new single family homes within the Octorara School District. Experience the rare combination of backyard country living on large homesites with the convenience of being just minutes from all major commuting routes.

The Alexander has a remarkable way of capturing one's attention from the moment you walk in. The 2-story foyer and center staircase separates the formal dining and living rooms while leading you into the open and airy main level. The 2 coat closets, pantry, and spacious laundry room all provide ample storage for the first floor. The owner's suite features an expansive walk-in closet and private bath with double bowl vanities, separate shower, and oversized soaking tub. Add up to 4 bedrooms on the 2nd floor! Experience comfortable living, experience living in an Alexander.

Visit our Decorated Model Home at:

313 W. 8th Ave, Parkesburg, PA

Phone: (610)857-5191 | Email: [sales@ChettyBuilders.com](mailto:sales@ChettyBuilders.com)

[www.ChettyBuilders.com](http://www.ChettyBuilders.com)



## First Floor



OPT MORNING RM.  
14'0"x12'0"

OPT.  
DOUBLE BOWL

OPTIONAL

OPTIONAL FIREPLACE

OPTIONAL

FAMILY  
ROOM  
16'-0"x14'-0"

DINING AREA  
8'-5"x11'-0"

KITCHEN

OPTIONAL

P.R. C

OPTIONAL

## LAUNCH

LIVING ROOM  
11'-8"x11'-0"

DINING ROOM  
11'-0"x13'-0"

2-CAR GARAGE  
21'-4"/29'-4"

2 STORY  
FOYER

CL.

**Chetty**  
Builders

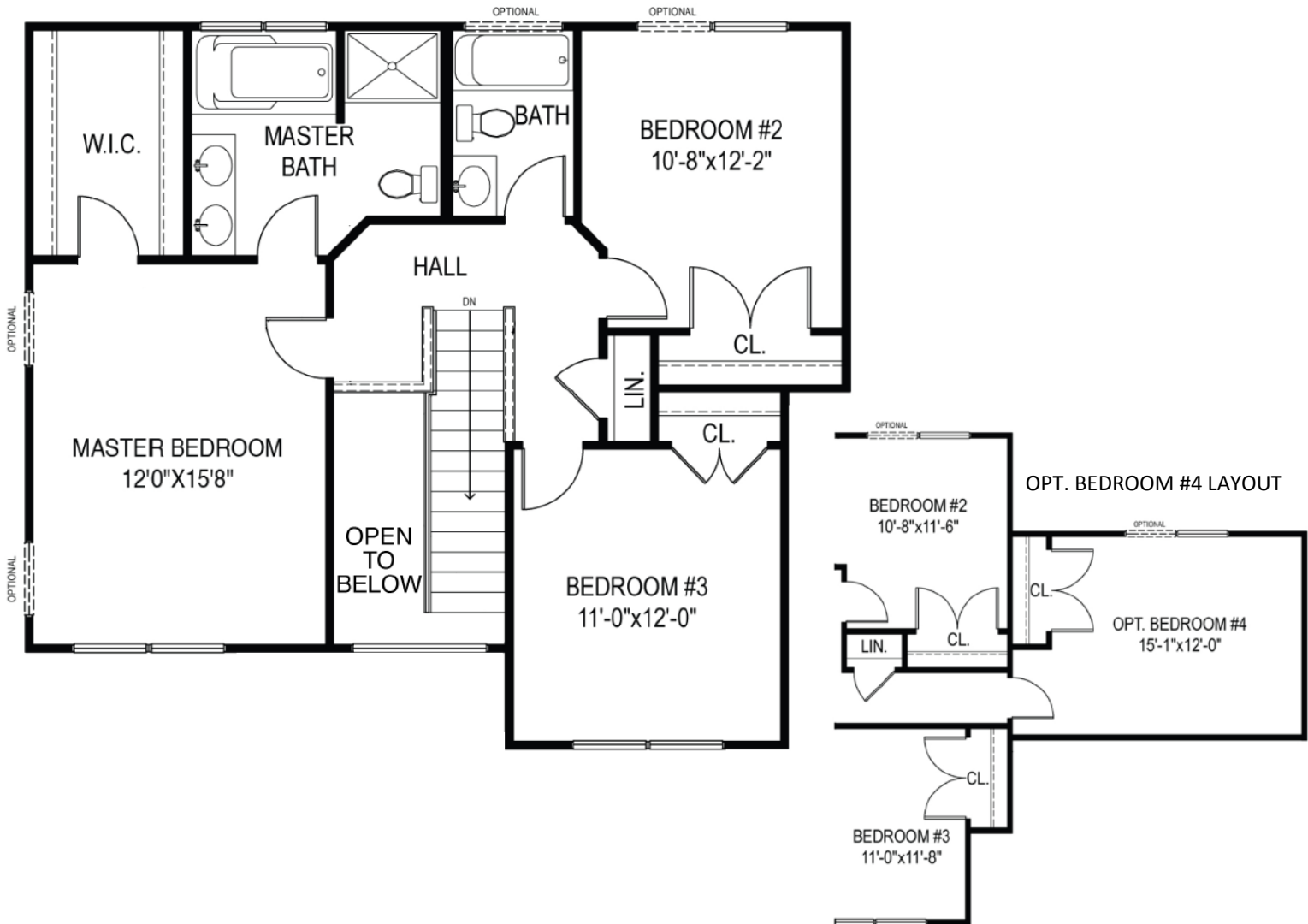
313 W. 8th Ave, Parkesburg, PA

[www.ChettyBuilders.com](http://www.ChettyBuilders.com)



# The Alexander

## Second Floor



Visit our Decorated Model Home at:

313 W. 8th Ave, Parkesburg, PA

Phone: (610)857-5191 | Email: [sales@ChettyBuilders.com](mailto:sales@ChettyBuilders.com)

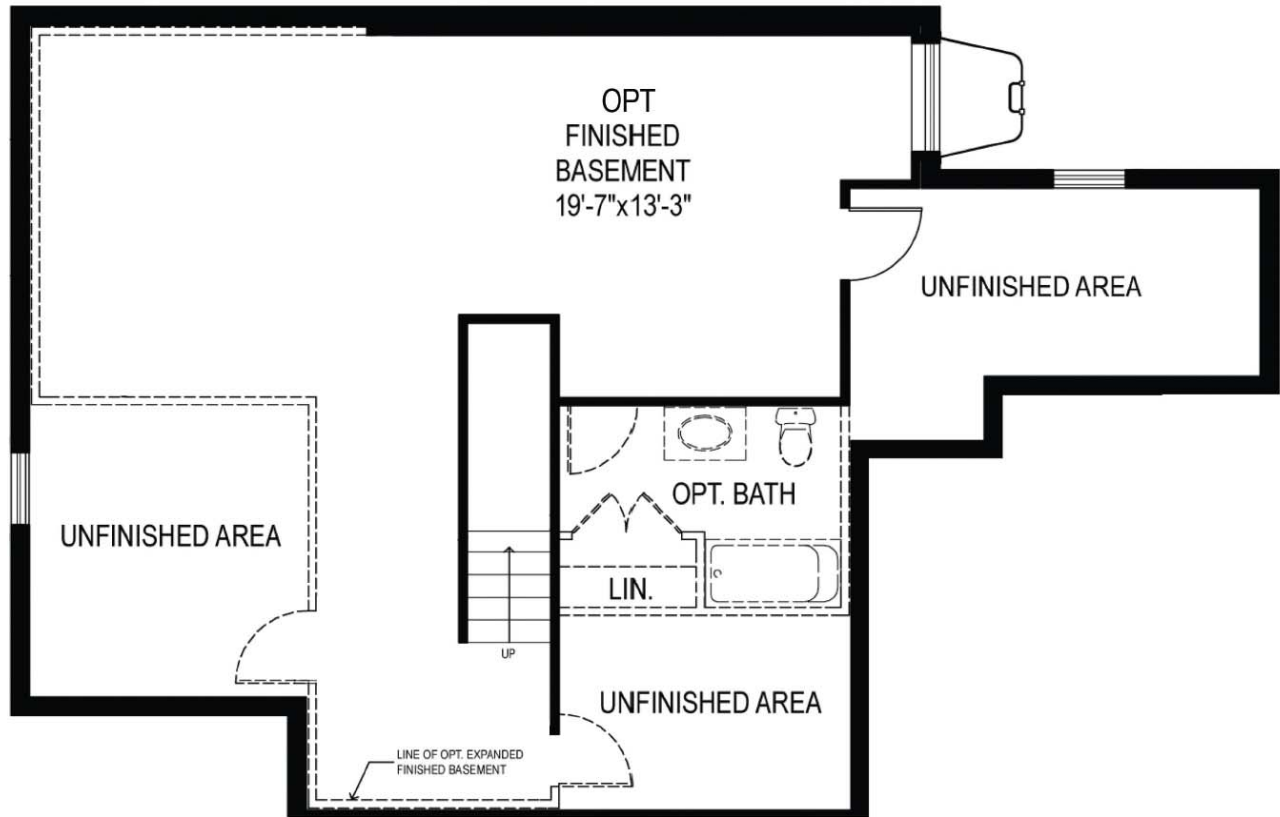
[www.ChettyBuilders.com](http://www.ChettyBuilders.com)



# *The Alexander*

## Basement Floor

OPT. FINISHED BASEMENT LAYOUT



Visit our Decorated Model Home at:

313 W. 8th Ave, Parkesburg, PA

Phone: (610)857-5191 | Email: [sales@ChettyBuilders.com](mailto:sales@ChettyBuilders.com)

[www.ChettyBuilders.com](http://www.ChettyBuilders.com)

